

CONNECT



MAKING COMPUTERS THINK FOR 25+ YEARS

 E-Ring, Inc

Our journey began in 1999 when two CAD software engineers left Intergraph Corporation to create a web-based business application platform that seamlessly integrates CAD data, GIS, and document management with a dynamic workflow engine tailored for business users. After years of dedication and determination, we proudly launched our first product, the "Capture Platform," designed specifically for the construction industry. As our company and team flourished, we expanded our vision, developing innovative products for the manufacturing and government sectors.

THE JOURNEY CONTINUES DRIVEN BY AN UNWAVERING COMMITMENT TO HARNESS NEW TECHNOLOGIES TO SOLVE OUR CUSTOMERS' CHALLENGES

Today, E-Ring stands out as a leader in bringing agentic AI to the local government industry primarily through its Connect platform, which unifies fragmented government services and leverages agentic AI for proactive citizen engagement and enhanced efficiency. In essence, E-Ring is leading by not just offering AI, but by delivering agentic AI within a unified, citizen-centric platform that directly addresses the challenges of efficiency, accessibility, and responsiveness faced by local governments. E-Ring is empowering local governments to serve their communities more effectively through intelligent automation and proactive engagement.

AGENTIC AI

CONNECT HARNESSSES THE POWER OF AGENTIC AI FROM INTEGRATION TO G2C ELEVATE YOUR OFFICE STAFF AND COMMUNITY EXPERIENCE.

In today's fast-paced environment, the key to unlocking your team's full potential lies in smart integration, not replacement. By bringing powerful, integrated AI agents into your operations, you're not just adopting new technology; you're fundamentally enhancing how your team works. These aren't just tools; they are intelligent collaborators designed to handle routine, time-consuming, or complex data-intensive tasks. This strategic partnership frees up your human staff to focus on what they do best.

These intelligent AI agents

don't just present information; they proactively understand citizen needs, anticipate inquiries, and even initiate complex workflows across various integrated applications. An AI agent could guide a citizen through a multi-step process, automatically populating forms with existing data and submitting them to the relevant department, even if that department uses a different backend system. This innovative blend of unified access and proactive agentic AI makes Connect an unparalleled solution for enhancing local government-to-citizen engagement and efficiency.

ICAI



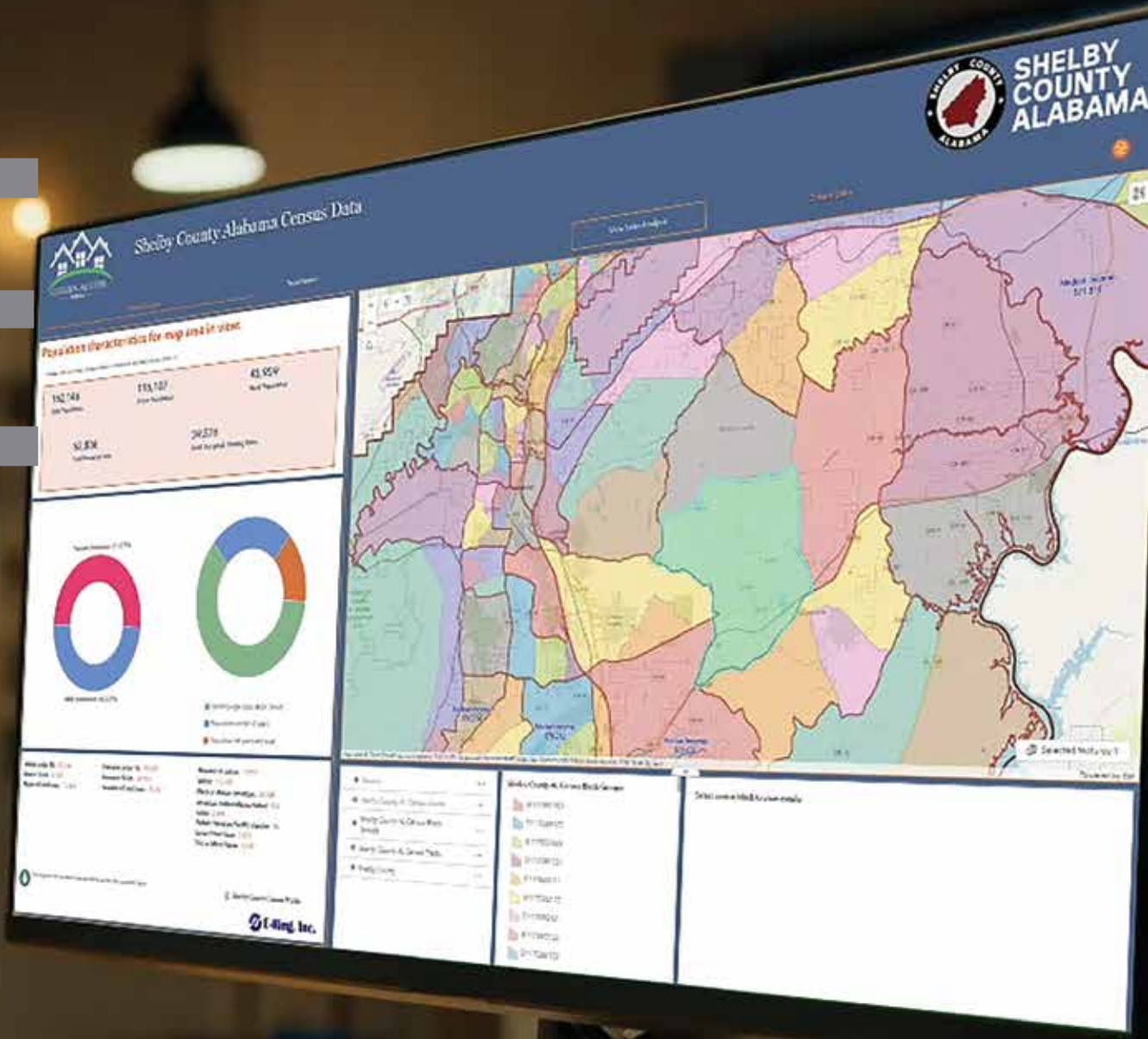
ELECTRONIC GOVERNANCE

CONNECT, A PLATFORM THAT UNIFIES
THE E-GOVERNANCE EXPERIENCE
BRINGING YOUR OFFICE TOGETHER WITH THE COMMUNITY.

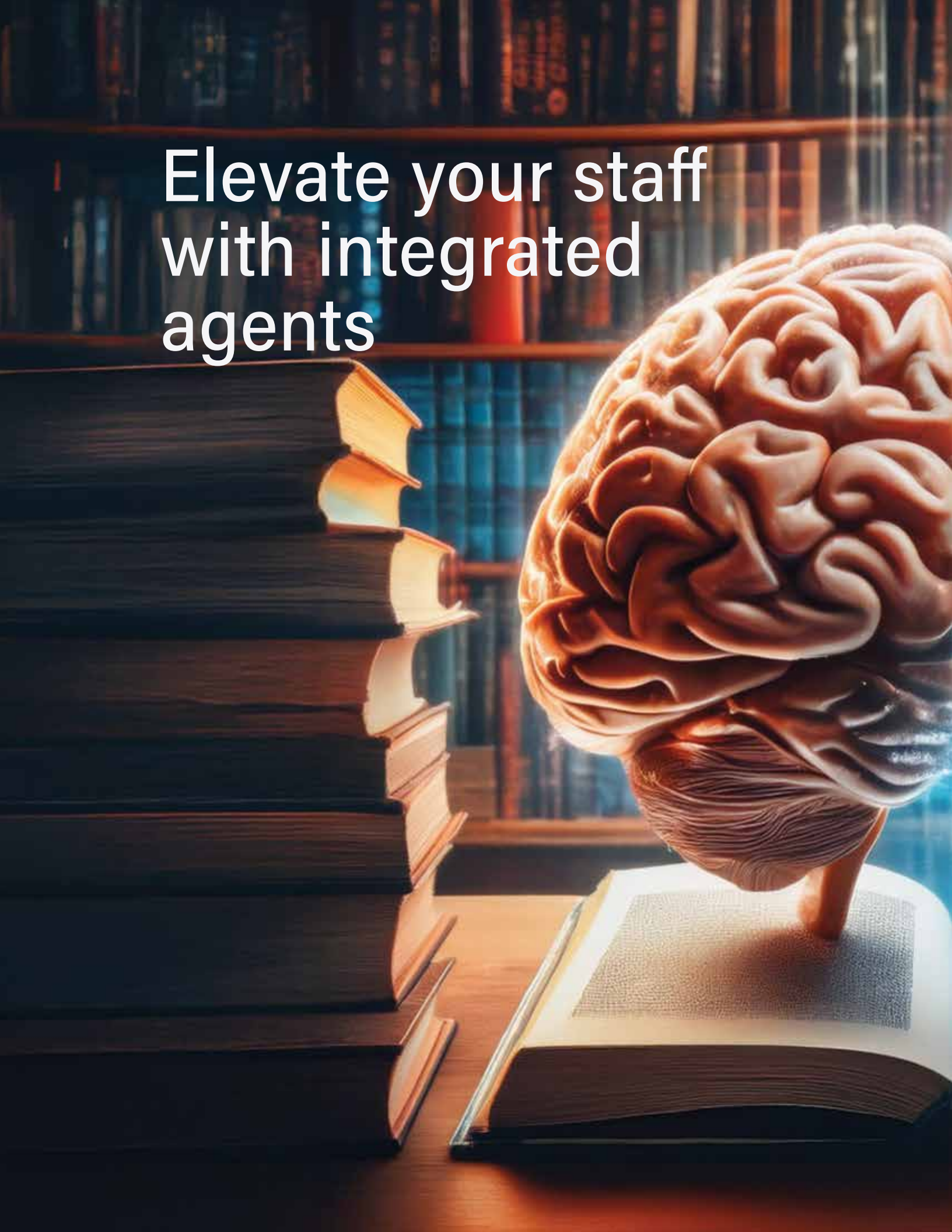
Connect is a transformative e-governance platform that masterfully unifies the often-fragmented landscape of local government services, creating a seamless and intuitive experience for citizens. At its core, Connect acts as an intelligent aggregator, pulling together disparate third-

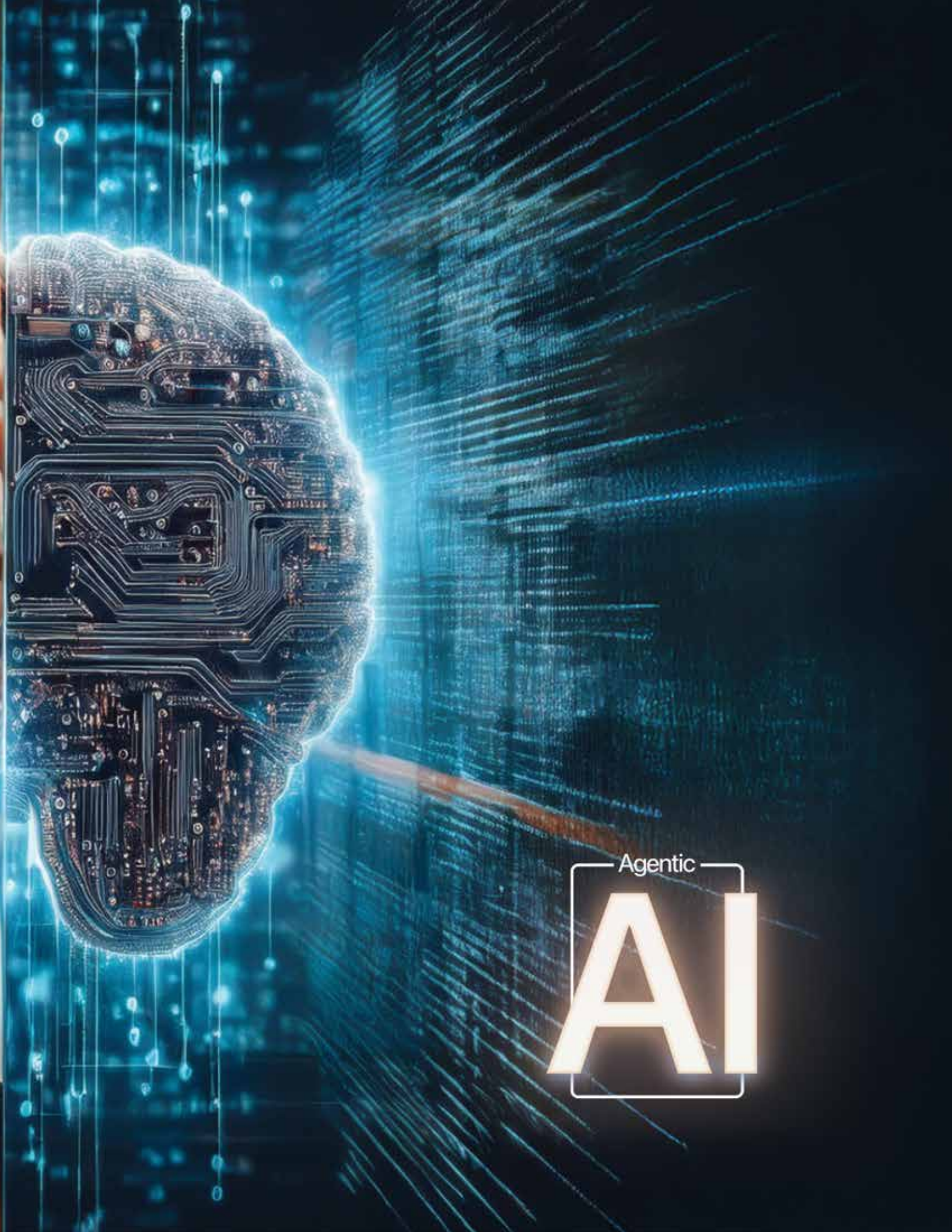
party applications—from tax billing and exemption applications to legal cases and public works requests, and anything else—into a single, cohesive interface. This eliminates the need for citizens to navigate multiple websites or platforms, centralizing all interactions with their local government.

CCCE



Elevate your staff
with integrated
agents





Agentic

AI

DOCUMENT PROCESSING

CONNECT'S CORE AI IN ACTION,
INTELLIGENT DOCUMENT PROCESSING
DESIGNED TO AUTOMATE WITH SPEED AND ACCURACY.

Connect's Intelligent Document Processing (IDP) utilizes AI technologies to automate the extraction of information, enabling the understanding and processing of various types of documents. By transforming unstructured or semi-structured data into structured, actionable insights, Connect's IDP system automatically populates

forms, updates databases, and streamlines workflows. This leads to significant improvements in efficiency, accuracy, and cost savings compared to manual data entry. For example, the system can quickly and accurately auto-populate a form using details extracted from a scanned driver's license, providing the community with a tool they love.

T
NG



PAYMENT PROCESSING

CONNECT PROVIDES AN ONLINE
PAYMENT PROCESSING PLATFORM
CONNECT IS MORE THAN JUST A PUBLIC WEBSITE.

Connect is designed to be accessible on all screen sizes. With user-friendly AI assistance, the community receives virtual support similar to what they would get if they were in your office.

Connect is the ideal solution for providing any type of online payment option to the public.

Nowadays, many people prefer the convenience of making transactions directly from their mobile devices, and paying taxes or fees are no exception. With Connect, users can search for their properties, add tax bills to a cart, and easily pay with a credit card—all from the comfort of their phones.

NG



KIOSK

CONNECT'S AGENTIC AI KIOSKS OFFER TRANSFORMATIVE INTELLIGENT ASSISTANCE BUILD TRUST AND LOYALTY WITH USER-CENTRIC INTERACTION.

Unlike traditional kiosks, Connect's agentic AI-driven kiosks enhance customer experiences by providing personalized and responsive interactions. They can anticipate customer needs, offer tailored solutions, and respond to natural language queries, in any language, effectively. These kiosks enable real-time data processing and decision-making,

which reduces latency and allows for immediate actions. Additionally, they enhance security and privacy by processing data locally and detecting potential risks in real time. This combination ultimately leads to cost savings, improved operational efficiency, and a more user-centric interaction, fostering trust and loyalty within the community.

S





E-Ring is a leader in bringing agentic AI to the local government industry primarily through its Connect platform, which unifies fragmented government services and leverages agentic AI for proactive citizen engagement and enhanced efficiency.



E-Ring, Inc.
3015 Windward Plaza
Suite 575
Alpharetta, GA 30005

P. 678-240-2750
F. 404-393-6974

www.ering-cad.com
sales@ering-cad.com